

Pine St Curb Extension at  
Kilburn St

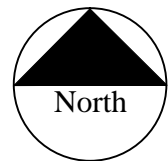
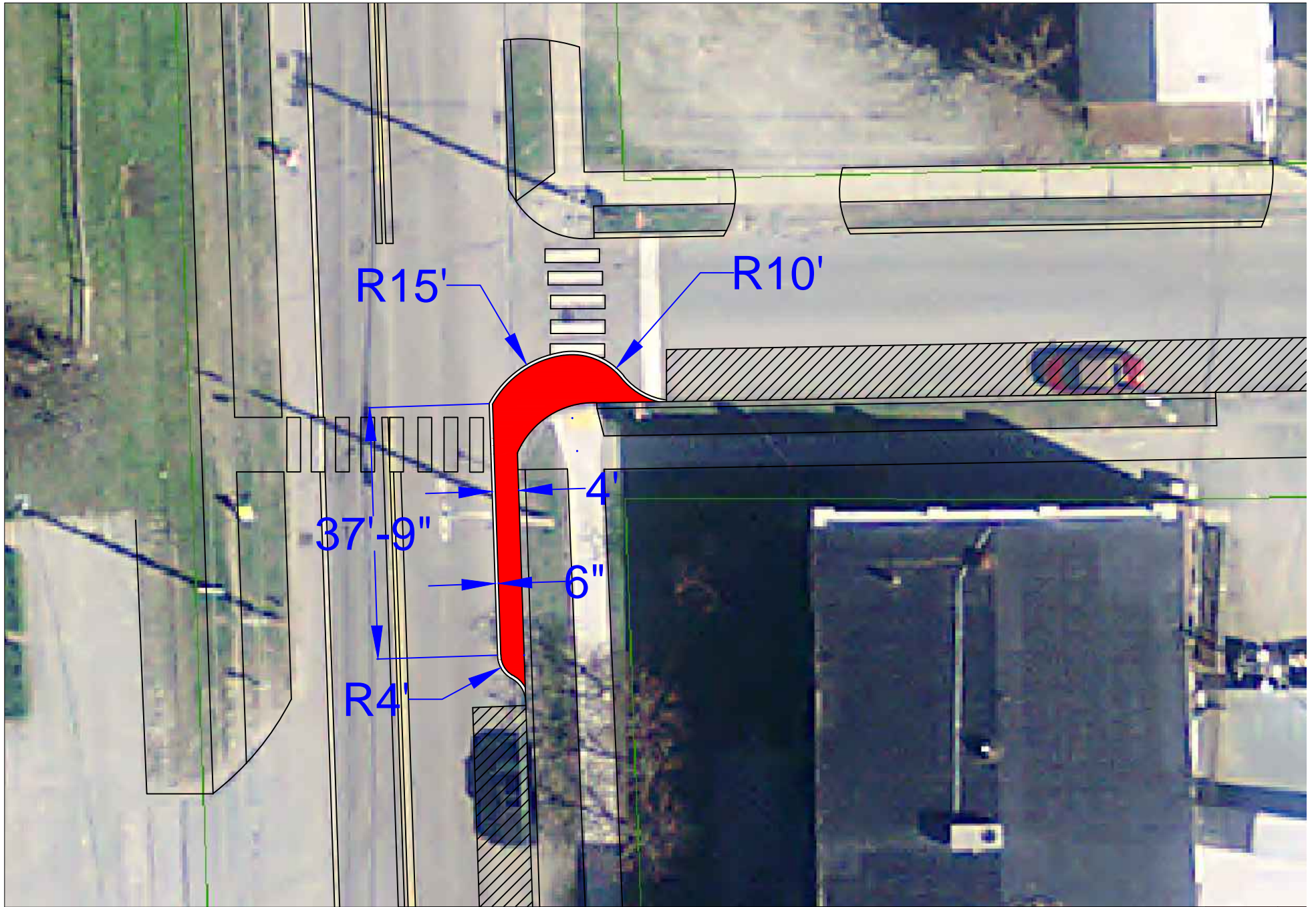
Proposed Conditions



**BURLINGTON  
PUBLIC WORKS  
ENGINEERING DIV.**

645 PINE STREET  
BURLINGTON, VT 05401  
(802) 863-9094  
(802) 863-0466 (Fax)

DESIGNED CNL	RI
DRAWN GG	S N
CHECKED N/A	DRW
DATE 7/28/16	SHEET



Pine St Curb Extension at  
Marble Ave

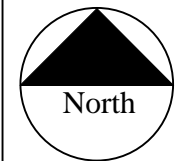
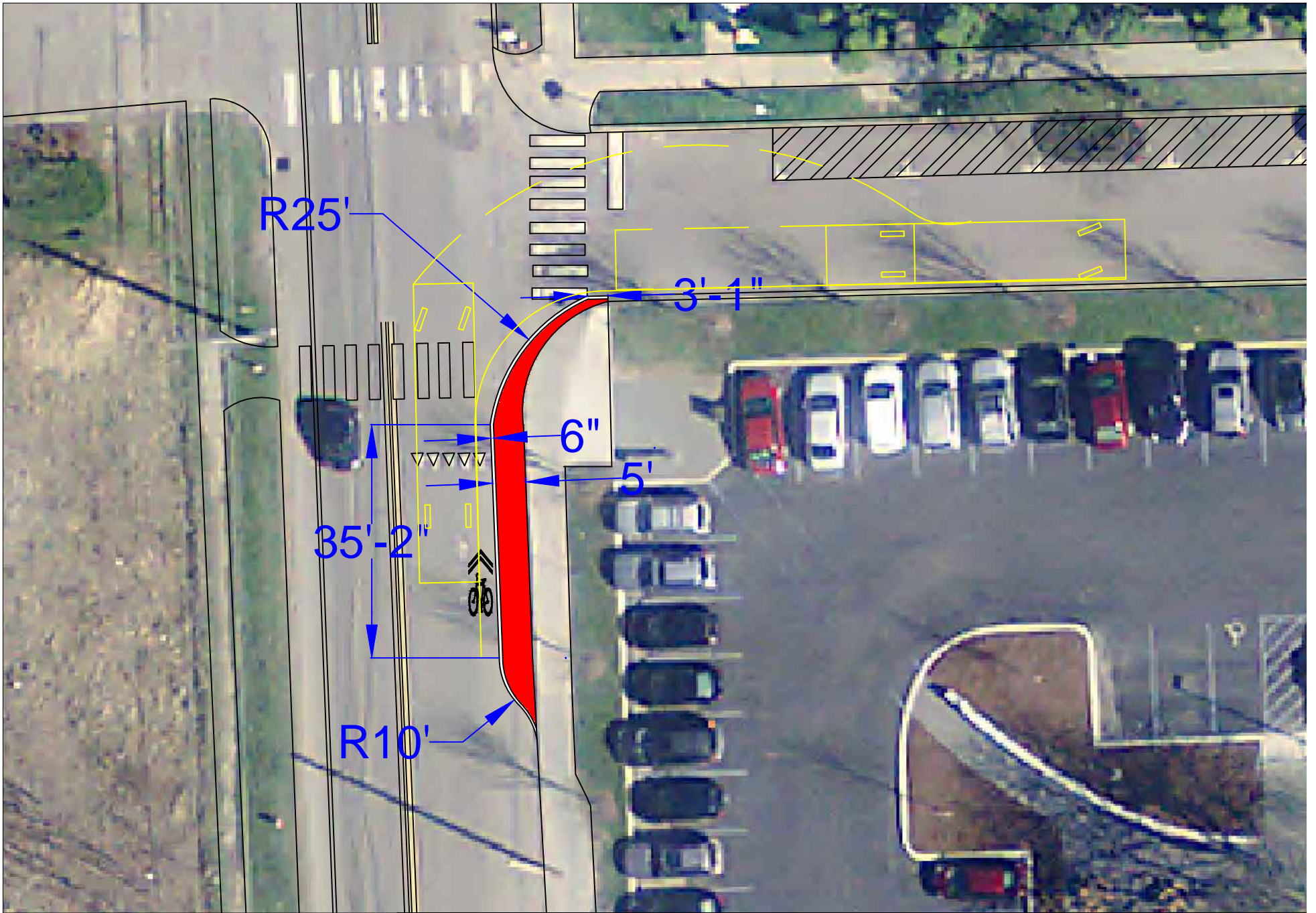
Proposed Conditions



**BURLINGTON  
PUBLIC WORKS  
ENGINEERING DIV.**

645 PINE STREET  
BURLINGTON, VT 05401  
(802) 863-9094  
(802) 863-0466 (Fax)

DESIGNED CNL	RI
DRAWN GG	S N
CHECKED N/A	DRAI
DATE 7/28/16	SHEET



Pine St Curb Extension at  
Howard St

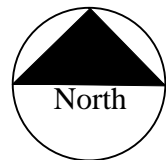
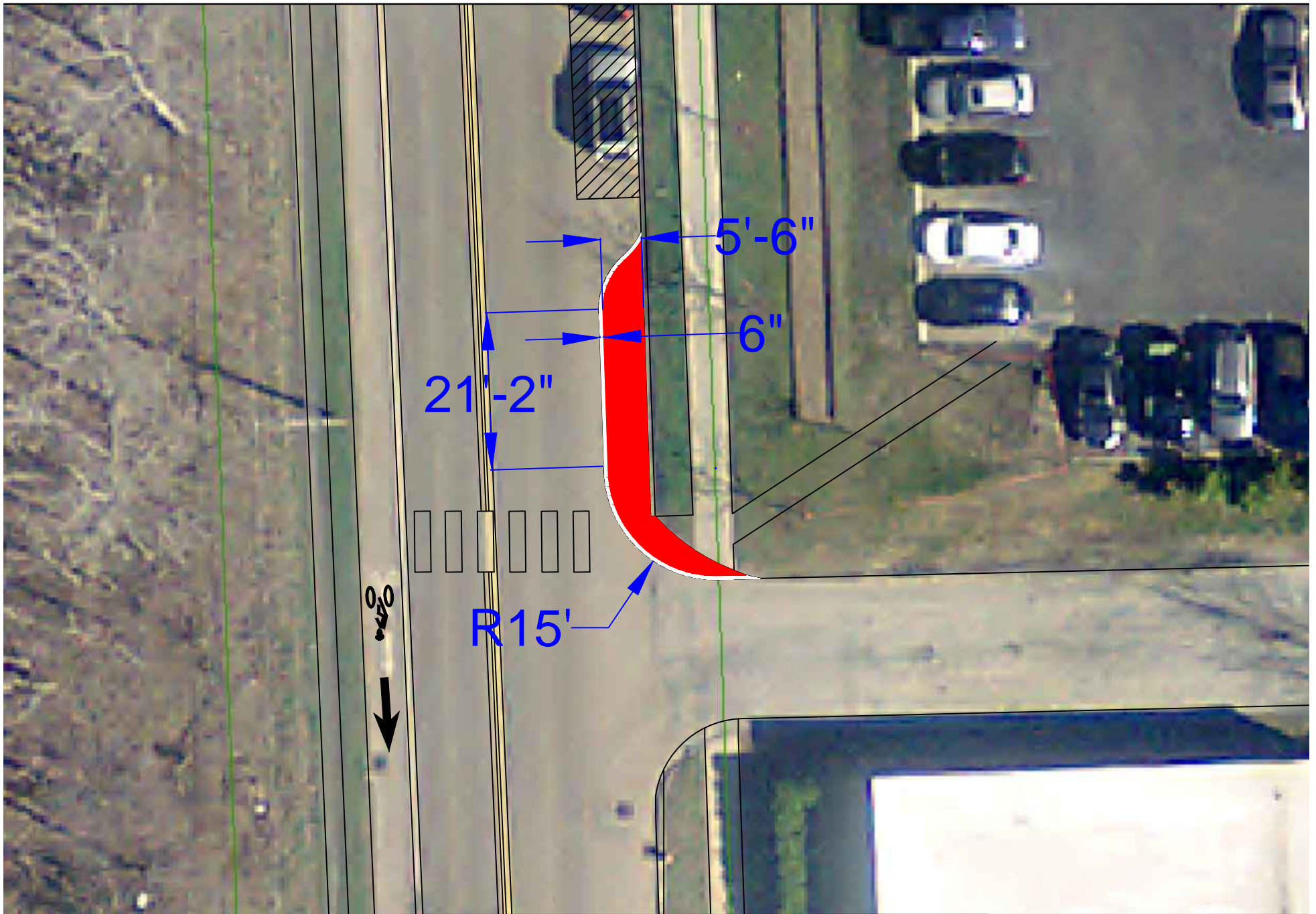
Proposed Conditions



**BURLINGTON  
PUBLIC WORKS  
ENGINEERING DIV.**

645 PINE STREET  
BURLINGTON, VT 05401  
(802) 863-9094  
(802) 863-0486 (Fax)

DESIGNED CNL	RI
DRAWN GG	S N
CHECKED N/A	DRA
DATE 7/28/16	SHEET



Pine St Curb Extension at  
Jackson Terrace

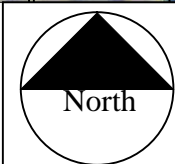
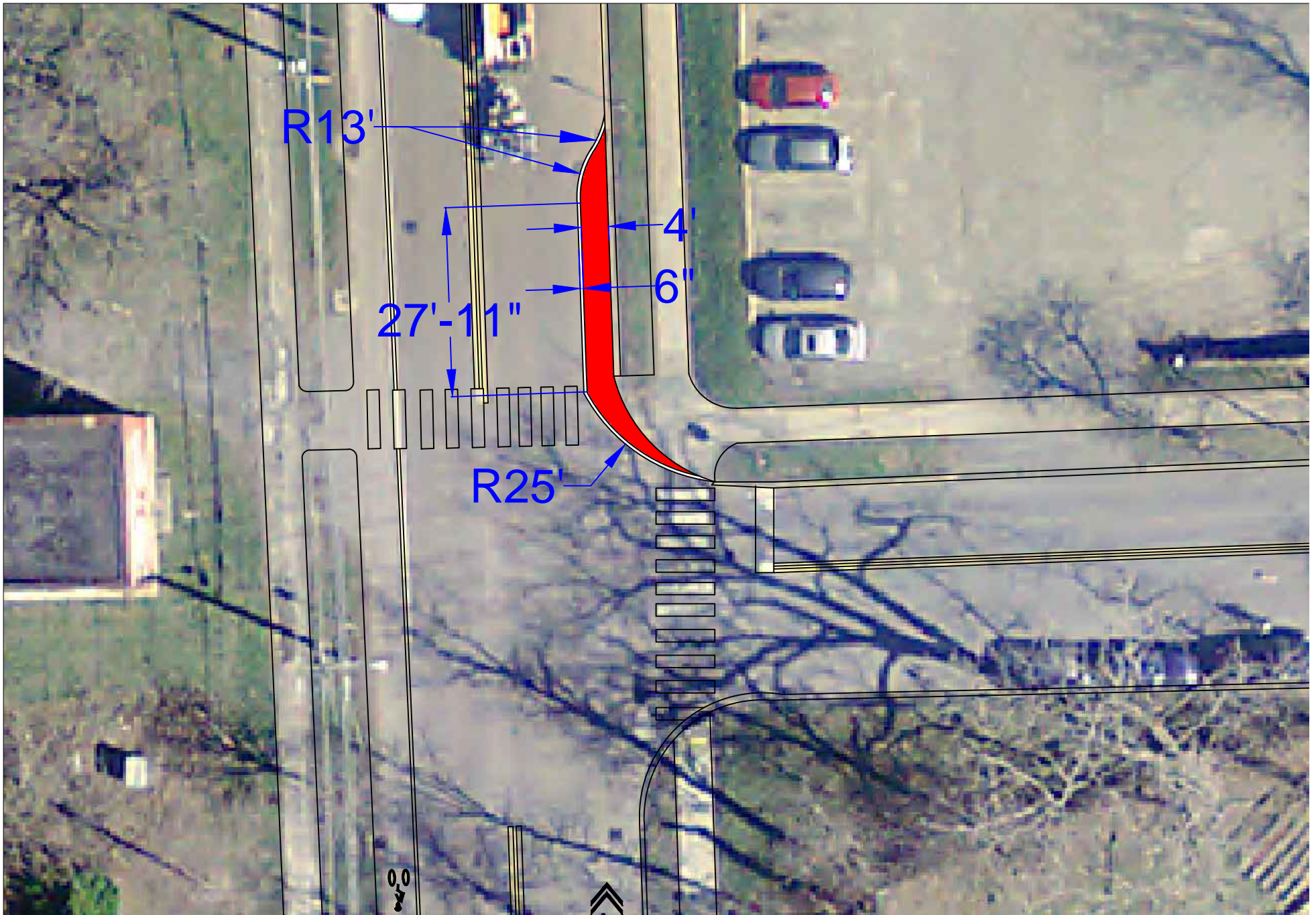
Proposed Conditions



**BURLINGTON  
PUBLIC WORKS  
ENGINEERING DIV.**

645 PINE STREET  
BURLINGTON, VT 05401  
(802) 863-9094  
(802) 863-0466 (Fax)

DESIGNED CNL	R
DRAWN GG	S
CHECKED N/A	DRA
DATE 7/28/16	SHEET



Pine St Curb Extension at  
Locust St

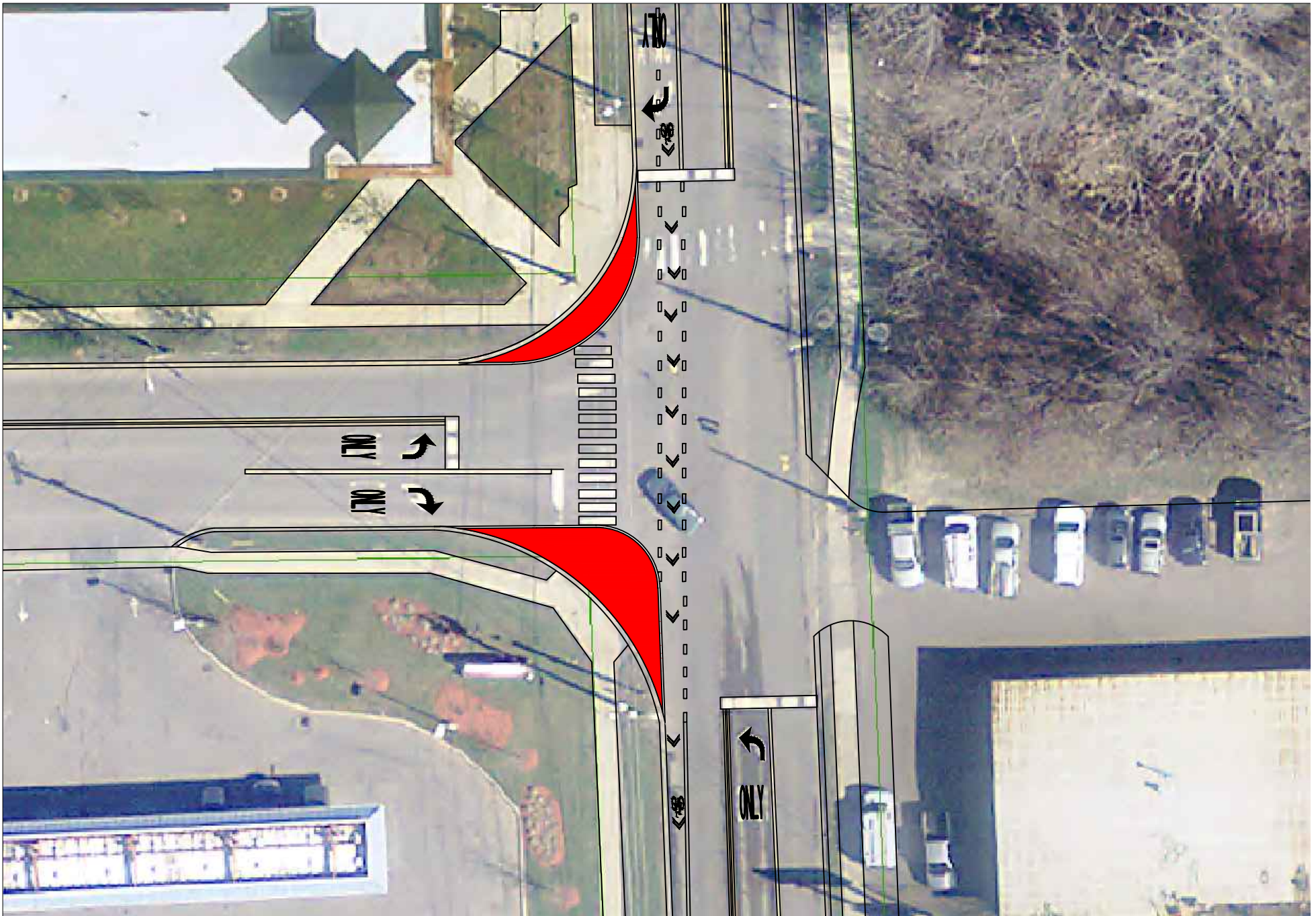
Proposed Conditions



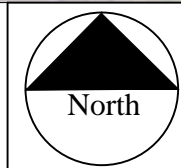
**BURLINGTON  
PUBLIC WORKS  
ENGINEERING DIV.**

645 PINE STREET  
BURLINGTON, VT 05401  
(802) 863-9094  
(802) 863-0466 (Fax)

DESIGNED CNL	RI
DRAWN GG	S N
CHECKED N/A	DRA
DATE 7/28/16	SHEET



Note: Curb extension on south side of Lakeside does not include bollards on the perimeter



Pine St Curb Extension at  
Lakeside Ave

Proposed Conditions



**BURLINGTON  
PUBLIC WORKS  
ENGINEERING DIV.**

645 PINE STREET  
BURLINGTON, VT 05401  
(802) 863-9094  
(802) 863-0466 (Fax)

DESIGNED CNL	RF
DRAWN GG	S N
CHECKED N/A	DRAY
DATE 7/28/16	SHEET